



Efficient 3D stereo object data capture

RhinoCapture™ provides an advanced and efficient set of functionalities to gather 3D data, even for complex urban configurations.

By combining DAT/EM **Summit Evolution™** with **RhinoCapture™**, users leverage the strength of both products to capture precise 3D building polygons from roof templates.

Summit Evolution

Digital 3D stereo photogrammetric workstation by DAT/EM
www.datem.com/summit

Assisted capture tools : snap 2D, snap 3D, enforced on polygon capture with slope respect, azimuth control, and guide lines

- All kinds of geometry drawing and editing tools : Point, curve, NURBS, etc.
- **Roof templates** implementation including 3D precise geometric intersection computations

RhinoCapture



Produce highly accurate 3D data

topology coplanarity

Easy-to-use interface

- Real time changes to the cursor display and status text according to the current snapping rules
- Advanced toolbars and touch pad available to facilitate operator's tasks

Smoothly integrated

RhinoCapture™ and **Summit Evolution™** work in tandem to let you acquire 3D data in a powerful 3D stereo environment: collected 3D features are rendered in both systems simultaneously.

Productivity

The smart user interface integrates roof templates. Combined with a high performance digital 3D stereo photogrammetric workstation, our software provides an enhanced user experience for maximum productivity.

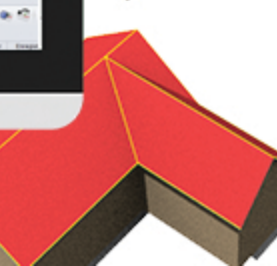
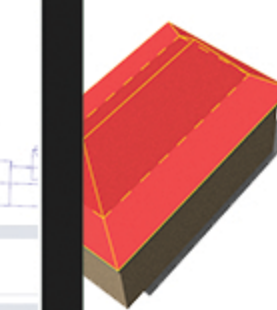
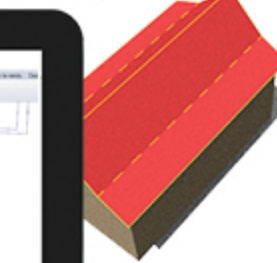
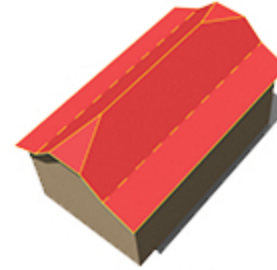
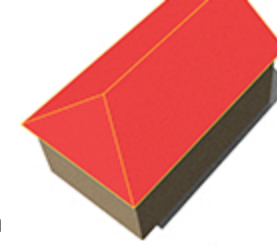
Roof templates

RhinoCapture™ provides a large set of roof templates to help you create topological and coplanar roofs with just a few mouse clicks.

Templates can be dynamic. Operator's moves are interpreted to propose automatic orientation with a real time display of the result.

Templates for dormers are also available !

Roof templates as displayed in the templates toolbar

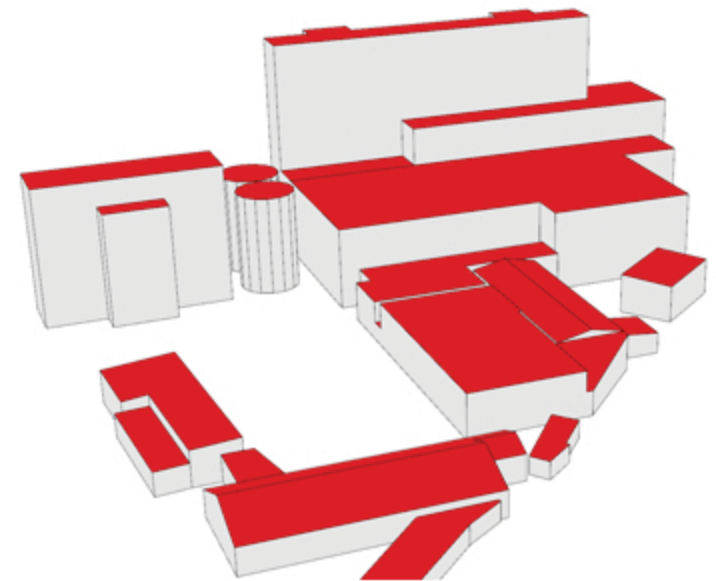


Going further

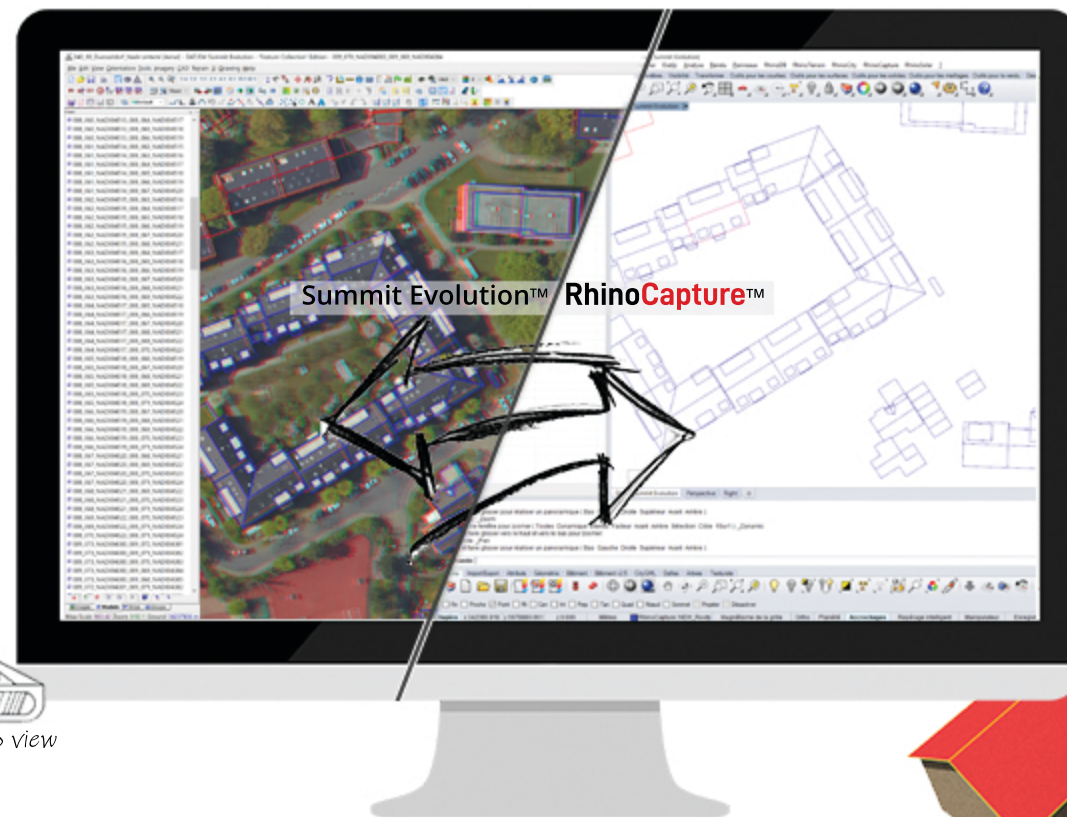
Capturing high quality 3D data is just the first step. Now use **RhinoCity™** to produce complete 3D textured urban models with embedded GIS information.

Seamlessly coupled with **RhinoCapture™**, **RhinoCity™** takes your data performance even further:

- Use roof lines to automatically model 3D buildings
- Add and edit attributes with GIS information tools
- Define textures from aerial imagery
- **Export to CityGML**
- And much more...



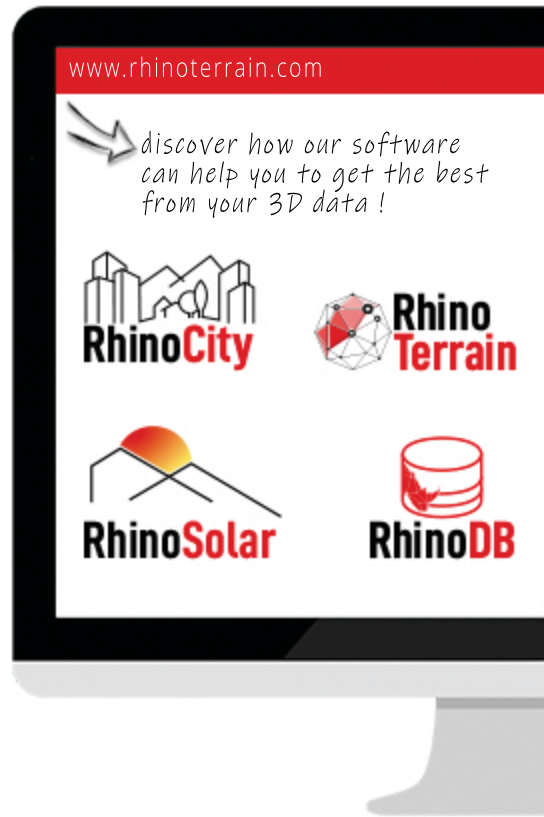
MORE INFORMATION ON www.rhinoterrain.com



3D stereo view



RhinoTerrain SAS
 9 Allée des Rapailles
 88000 EPINAL - France
 contact@rhinoterrain.com



Your reseller

& Terrain modeling City builder software

RhinoTerrain was created in 2008 by experts in geomatics and computer graphics. We won OSEO 2008, a French national competition which rewards innovative technology companies. Since then, we have been developing and expanding our suite of geo-modeling solutions.

Our team of highly skilled experts provides services in different disciplines, including architecture, urban planning, industry, and academic research.

All these skills contribute to a new generation of 3D geo-modeling tools dedicated to geo-referenced and standardized (CityGML) 3D data production.

“ We guarantee accurate results in record time owing to the optimal use of multicore processors combined with double precision calculations. ”



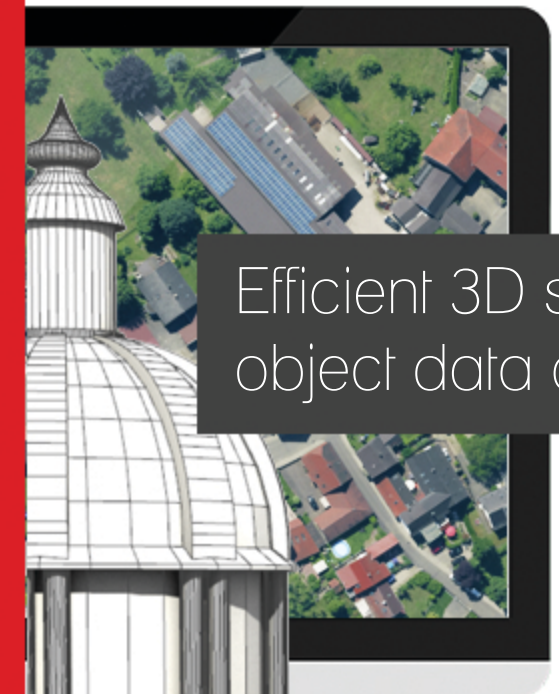
Fully integrated with Rhinoceros, the most versatile 3D modeler in the world, our flexible and responsive tools can efficiently compute massive amounts of geometric data.

64 VERSION
BITS
only

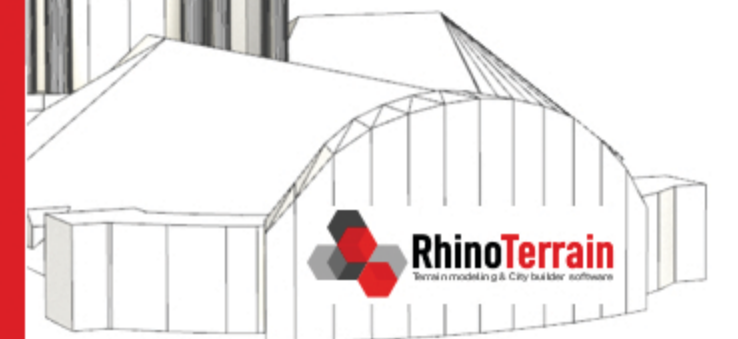
MORE INFORMATION ON [WWW.RHINOTERRAIN.COM](http://www.rhinoterrain.com)

THEY TRUST US

3D Geocosmos LLC (JP) • Aerowest (DE) • AIST (JP) • Artelia Holding (FR) • Aurblanc SARL (FR) • Avineon (NL) • Boston Architectural College (US) • Berner Fachhochschule (CH) • Bordeaux Métropole (FR) • Brest Métropole (FR) • Canal de Provence (FR) • Cannes (FR) • CODAH (Le Havre, FR) • Communauté de l'Agglomération Belfortaine (FR) • Communauté Urbaine de Cherbourg (FR) • Conseil Départemental des Alpes Maritimes • EDF/GDF Lab (FR) • École Nationale Supérieure d'Architecture de Lyon (FR) • Eurosense (RO) • FIT (FR) • GE Infra (FR) • Geosat (FR) • Gexpertise Systems (FR) • Grand Lyon (FR) • Harvard University Graduate School of Design (US) • HKD Géomatique Vaud SA (CH) • IGN (FR) • IGO (FR) • ILS Océan Indien (MG, grp. Parera) • INSA (FR) • Institute for Landscape Architecture (CH) • Kepco (KR) • Koike CO. Ltd. (JP) • Komenvoir (FR) • Louisiana State University (US) • Luxcarta (FR, ZA) • Luxembourg (LU) • Map Géomatique SA (CH) • Métropole Aix Marseille Provence (FR) • Métropole de Dijon (FR) • Métropole Nice Côte d'Azur • Metz Métropole (FR) • Métropole de Rennes (FR) • Métropole de Strasbourg (FR) • Monaco (MC) • Montréal (CA) • MTSI Europe (FR) • Ohio State University (US) • Okan University (TR) • Opsia (FR) • République et Canton de Genève (CH) • République et Canton de Neuchâtel (CH) • Sandellsandberg Arkitekter AB (SE) • Sasaki Associates (CN, US) • Setis (FR, grp. Degaud) • Sintegra (FR) • Siradel (FR) • Skidmore Owings & Merrill LLP aka. SOM (AE, HK, UK, US) • Société des Aéroports de la Côte d'Azur (FR) • Sixsense Mapping (FR) • Spatial SA (CH) • Systra (FR) • Toulouse (FR) • Tractebel Engineering SA (FR, grp. ENGIE) • Université de Montréal (CA) • University of Pennsylvania School of Design (US) • University of California - Berkeley (US) • University of Pennsylvania, PennDesign (US) • University of Virginia (US) • University of Washington (US) • Vinci (FR) • YAMAHA Motor Co. Ltd. (JP) • ...



Efficient 3D stereo
 object data capture



DISCOVER TESTIMONIALS ON [WWW.RHINOTERRAIN.COM](http://www.rhinoterrain.com)